



1117 North Second Street - Murphysboro, IL 62966 USA - Tel: 618.684.2146 - www.pennconduit.com

Product Specification Data

All Penn Aluminum Conduit & EMT products are manufactured from US-produced domestic recycled aluminum billet. Rigid Aluminum Conduit pipe and Aluminum Electrical Metallic Tubing are extruded and fabricated in our facility in Murphysboro, IL.

1. Meets the Provisions of Build America, Buy America Act
2. Meets or exceeds the UL 6A Standard for Safety for Electric Rigid Metal Conduit – Aluminum, Red Brass, and Stainless Steel. Underwriters Laboratories File # E514709.
3. Meets or exceeds Canadian Standards Association (CSA) Standard C22.2 No. 45.2.

Rigid Aluminum Conduit Specifications

Aluminum Alloy: 6063

UL File # E514709

Standard 10 foot length with coupling

Custom lengths longer than 10 feet available

Penn Part Number	US Trade Size	Approximate Weight per 100 feet w/ coupling	Nominal Outside Diameter*	Nominal Inside Diameter**	Nominal Wall Thickness**	Threads/Inch	Length of Finished Conduit without Coupling***	Master Bundle (Lift)		
		lb.	in	in	in		+/- .25 in	ft	pcs	lb
P-012-10-RAC	1/2	28.1	0.840	0.632	0.104	14	9' 11-1/4"	2,500	250	703
P-034-10-RAC	3/4	37.4	1.050	0.836	0.107	14	9' 11-1/4"	2,500	250	935
P-100-10-RAC	1	54.5	1.315	1.063	0.126	11-1/2	9' 11"	2,000	200	1,090
P-114-10-RAC	1-1/4	71.6	1.660	1.394	0.133	11-1/2	9' 11"	1,000	100	716
P-112-10-RAC	1-1/2	88.7	1.900	1.624	0.138	11-1/2	9' 11"	1,000	100	887
P-200-10-RAC	2	118.5	2.375	2.083	0.146	11-1/2	9' 11"	450	45	533
P-212-10-RAC	2-1/2	187.5	2.875	2.489	0.193	8	9' 10-1/2"	300	30	562
P-300-10-RAC	3	246.3	3.500	3.090	0.205	8	9' 10-1/2"	200	20	492
P-312-10-RAC	3-1/2	295.6	4.000	3.570	0.215	8	9' 10-1/4"	200	20	591
P-400-10-RAC	4	350.2	4.500	4.050	0.225	8	9' 10-1/4"	200	20	700
P-500-10-RAC	5	478.9	5.563	5.073	0.245	8	9' 10"	80	8	383
P-600-10-RAC	6	630.4	6.625	6.093	0.266	8	9' 10"	60	6	378

* Applicable Tolerances Outside Diameter 1/2" to 1-1/2": +/- 0.015"; 2" to 6": +/- 1%

** For information only. Not a standards requirement.

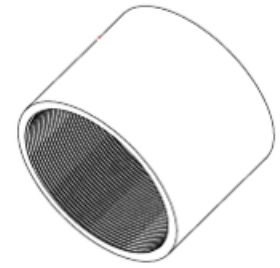
*** Rigid Aluminum Conduit is manufactured to produce a 10 foot length of conduit when a standard coupling is attached.

Rigid Aluminum Coupling Specifications

Aluminum Alloy: 6061

UL File # E514709

Penn Part Number	US Trade Size	Approximate Weight per 100 Pieces	Nominal Outside Diameter	Minimum Acceptable Length	Standard Carton Quantity	Threads per Inch
		lb.	in	in	pcs	
P-012-CPL	1/2	6.1	1.078	1-5/8	100	14
P-034-CPL	3/4	9.1	1.328	1-41/64	50	14
P-100-CPL	1	12.5	1.562	1-31/32	50	11-1/2
P-114-CPL	1-1/4	18.9	1.953	2-1/32	50	11-1/2
P-112-CPL	1-1/2	23.3	2.219	2-1/16	50	11-1/2
P-200-CPL	2	34.6	2.750	2-1/8	50	11-1/2
P-212-CPL	2-1/2	68.3	3.281	3-3/16	25	8
P-300-CPL	3	91.4	3.812	3-5/16	25	8
P-312-CPL	3-1/2	108.0	4.438	3-13/32	10	8
P-400-CPL	4	142.0	5.000	3-33/64	10	8
P-500-CPL	5	241.9	6.219	3-61/64	5	8
P-600-CPL	6	321.0	7.312	4-1/4	5	8

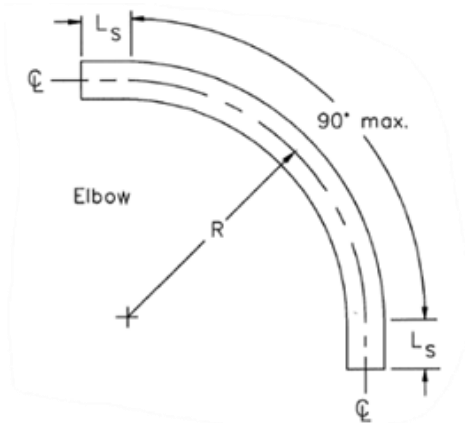


Rigid Aluminum 90 deg Elbow Specifications

Aluminum Alloy: 6061

UL File # E514709

Penn Part Number	US Trade Size	Weight per Each	Radius "R"	Straight Length "L _s "	Threads per Inch
		lb.	in	in	
P-012-RL90	1/2	0.26	4.00	1.5	14
P-034-RL90	3/4	0.36	4.50	1.5	14
P-100-RL90	1	0.63	5.75	1.875	11-1/2
P-114-RL90	1-1/4	1.01	7.25	2	11-1/2
P-112-RL90	1-1/2	1.40	8.25	2	11-1/2
P-200-RL90	2	2.30	9.50	2	11-1/2
P-212-RL90	2-1/2	4.08	10.50	3	8
P-300-RL90	3	6.41	13.00	3.125	8
P-312-RL90	3-1/2	8.93	15.00	3.25	8
P-400-RL90	4	11.1	16.00	3.375	8
P-500-RL90	5	24.72	24.00	3.625	8
P-600-RL90	6	38.72	30.00	3.75	8



The Smart Choice.

Proudly Serving the American Electrical Construction Industry

