



1117 North Second Street - Murphysboro, IL 62966 USA - Tel: 618.684.2146 - www.pennconduit.com

Product Specification Data

All Penn Aluminum Conduit & EMT products are manufactured from US-produced domestic recycled aluminum billet. Rigid Aluminum Conduit pipe and Aluminum Electrical Metallic Tubing are extruded and fabricated in our facility in Murphysboro, IL.

1. Meets the Provisions of Build America, Buy America Act
2. Meets or exceeds the UL 6A Standard for Safety for Electric Rigid Metal Conduit – Aluminum, Red Brass, and Stainless Steel. Underwriters Laboratories File # E514709.
3. Meets or exceeds Canadian Standards Association (CSA) Standard C22.2 No. 45.2.

Rigid Aluminum Conduit Specifications

Aluminum Alloy: 6063

UL File # E514709

Standard 10 foot length with coupling

Custom lengths longer than 10 feet available

Penn Part Number	US Trade Size	Approximate Weight per 100 feet w/ coupling	Nominal Outside Diameter*	Nominal Inside Diameter**	Nominal Wall Thickness**	Threads/Inch	Length of Finished Conduit without Coupling***	Master Bundle (Lift)		
		lb.	in	in	in		+/- .25 in	ft	pcs	lb
P-012-10-RAC	1/2	28.1	0.840	0.632	0.104	14	9' 11-1/4"	2,500	250	703
P-034-10-RAC	3/4	37.4	1.050	0.836	0.107	14	9' 11-1/4"	2,500	250	935
P-100-10-RAC	1	54.5	1.315	1.063	0.126	11-1/2	9' 11"	2,000	200	1,090
P-114-10-RAC	1-1/4	71.6	1.660	1.394	0.133	11-1/2	9' 11"	1,000	100	716
P-112-10-RAC	1-1/2	88.7	1.900	1.624	0.138	11-1/2	9' 11"	1,000	100	887
P-200-10-RAC	2	118.5	2.375	2.083	0.146	11-1/2	9' 11"	450	45	533
P-212-10-RAC	2-1/2	187.5	2.875	2.489	0.193	8	9' 10-1/2"	300	30	562
P-300-10-RAC	3	246.3	3.500	3.090	0.205	8	9' 10-1/2"	200	20	492
P-312-10-RAC	3-1/2	295.6	4.000	3.570	0.215	8	9' 10-1/4"	200	20	591
P-400-10-RAC	4	350.2	4.500	4.050	0.225	8	9' 10-1/4"	200	20	700
P-500-10-RAC	5	478.9	5.563	5.073	0.245	8	9' 10"	80	8	383
P-600-10-RAC	6	630.4	6.625	6.093	0.266	8	9' 10"	60	6	378

* Applicable Tolerances Outside Diameter 1/2" to 1-1/2": +/- 0.015"; 2" to 6": +/- 1%

** For information only. Not a standards requirement.

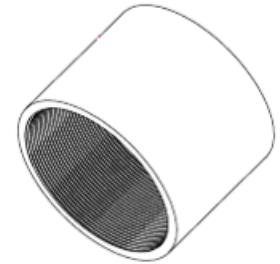
*** Rigid Aluminum Conduit is manufactured to produce a 10 foot length of conduit when a standard coupling is attached.

Rigid Aluminum Coupling Specifications

Aluminum Alloy: 6061

UL File # E514709

Penn Part Number	US Trade Size	Approximate Weight per 100 Pieces	Nominal Outside Diameter	Minimum Acceptable Length	Standard Carton Quantity	Threads per Inch
		lb.	in	in	pcs	
P-012-CPL	1/2	6.1	1.078	1-5/8	100	14
P-034-CPL	3/4	9.1	1.328	1-41/64	50	14
P-100-CPL	1	12.5	1.562	1-31/32	50	11-1/2
P-114-CPL	1-1/4	18.9	1.953	2-1/32	50	11-1/2
P-112-CPL	1-1/2	23.3	2.219	2-1/16	50	11-1/2
P-200-CPL	2	34.6	2.750	2-1/8	50	11-1/2
P-212-CPL	2-1/2	68.3	3.281	3-3/16	25	8
P-300-CPL	3	91.4	3.812	3-5/16	25	8
P-312-CPL	3-1/2	108.0	4.438	3-13/32	10	8
P-400-CPL	4	142.0	5.000	3-33/64	10	8
P-500-CPL	5	241.9	6.219	3-61/64	5	8
P-600-CPL	6	321.0	7.312	4-1/4	5	8

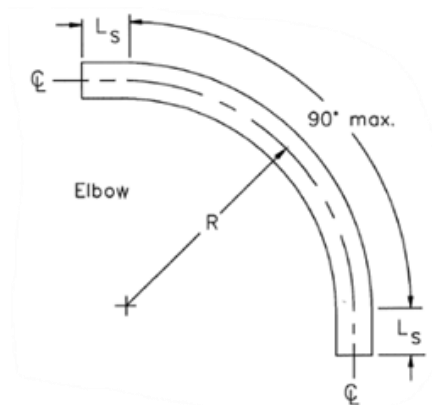


Rigid Aluminum 90 deg Elbow Specifications

Aluminum Alloy: 6061

UL File # E514709

Penn Part Number	US Trade Size	Weight per Each	Radius "R"	Straight Length "L _s "	Threads per Inch
		lb.	in	in	
P-012-RL90	1/2	0.26	4.00	1.5	14
P-034-RL90	3/4	0.36	4.50	1.5	14
P-100-RL90	1	0.63	5.75	1.875	11-1/2
P-114-RL90	1-1/4	1.01	7.25	2	11-1/2
P-112-RL90	1-1/2	1.40	8.25	2	11-1/2
P-200-RL90	2	2.30	9.50	2	11-1/2
P-212-RL90	2-1/2	4.08	10.50	3	8
P-300-RL90	3	6.41	13.00	3.125	8
P-312-RL90	3-1/2	8.93	15.00	3.25	8
P-400-RL90	4	11.1	16.00	3.375	8
P-500-RL90	5	24.72	24.00	3.625	8
P-600-RL90	6	38.72	30.00	3.75	8





1117 North Second Street - Murphysboro, IL 62966 USA - Tel: 618.684.2146 - www.pennconduit.com

Product Specification Data

Penn Aluminum **BLUE LIGHTNING**® EMT

1. Thin-walled and lightweight (just 1/3 the weight of steel), for easy handling and installation.
2. **BLUE LIGHTNING** interior coating is UL listed to Category ZOKZ for Wire Pulling Compounds.
3. Fast and simple cutting and bending on the job site with metallurgical processing to minimize flattening, buckling and splitting.
4. Meets or exceeds the UL 797A standard for Safety for Electrical Metallic Tubing – Aluminum and Stainless Steel. Underwriters Laboratories File # E513195.
5. Superior finished outer appearance.
6. Smooth internal finish from extrusion process with no weld line.
7. Connects quickly with standard EMT fittings.

NOTE: As stated in NEC 358.14, "...galvanized steel fittings and enclosures shall be permitted to be used with Aluminum EMT when not subject to severe corrosive influences."

8. Fiberglass (or non-metallic) fish tape recommended.
9. Meets provisions of the Build America, Buy America Act.

Penn Aluminum **BLUE LIGHTNING** Electrical Metallic Tubing (EMT) Specifications

Aluminum Alloy: 6063

UL File # E513195

Standard 10-foot length - Deburred

Penn Part Number	US Trade Size	Approximate Weight per 100 feet	Nominal Outside Diameter	Nominal Inside Diameter*	Nominal Wall Thickness*	Master Bundle (Lift)		
						ft	pcs	lb
P-012-10-EMT-BL2	1/2	10.30	0.706	0.622	0.042	7,000	700	721
P-034-10-EMT-BL2	3/4	15.80	0.922	0.824	0.049	5,000	500	790
P-100-10-EMT-BL2	1	23.30	1.163	1.049	0.057	3,000	300	699
P-114-10-EMT-BL2	1-1/4	34.70	1.510	1.380	0.065	2,000	200	694
P-112-10-EMT-BL2	1-1/2	40.20	1.740	1.610	0.065	1,500	150	603
P-200-10-EMT-BL2	2	51.17	2.197	2.067	0.065	1200	120	614
P-212-10-EMT-BL2	2-1/2	74.59	2.875	2.731	0.072	610	61	455
P-300-10-EMT-BL2	3	91.18	3.500	3.356	0.072	510	51	465
P-312-10-EMT-BL2	3-1/2	120.00	4.000	3.834	0.083	370	37	444
P-400-10-EMT-BL2	4	135.66	4.500	4.334	0.083	300	30	407

* For reference only. Not a requirement of UL 797A Standard.

Penn Aluminum Electrical Metallic Tubing ("EMT") is manufactured to UL 797A.

Penn Aluminum EMT is a general use product.

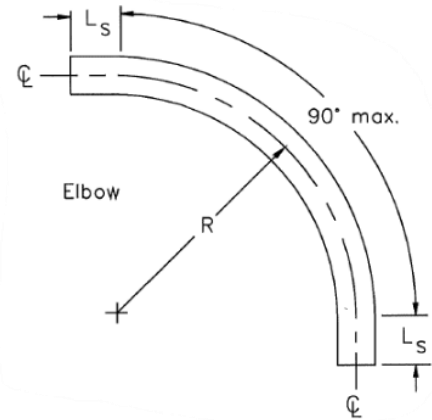
It is up to the architect, general contractor, and/or project manager to determine whether the EMT is appropriate for a specific application, or what additional requirements might be necessary for the use of EMT in a specific application.

Penn Aluminum **BLUE LIGHTNING** EMT 90 deg Elbow Specifications

Aluminum Alloy: 6063

UL File # E513195

Penn Part Number	US Trade Size	Weight per 100 pcs	Radius "R"	Straight Length "L _s "
		lb.	in	in
P-012-EL90	1/2	10.93	4.00	1.5
P-034-EL90	3/4	17.97	4.50	1.5
P-100-EL90	1	31.43	5.75	1.875
P-114-EL90	1-1/4	50.24	7.25	2
P-112-EL90	1-1/2	68.16	8.25	2
P-200-EL90	2	96.72	9.50	2
P-212-EL90	2-1/2	228.29	10.5	3
P-300-EL90	3	336.30	13	3.125
P-312-EL90	3-1/2	549.33	15	3.25
P-400-EL90	4	660.95	16	3.75



All Penn Aluminum Conduit & EMT products are manufactured from US-produced domestic recycled aluminum billet. Rigid Aluminum Conduit pipe and Aluminum Electrical Metallic Tubing are extruded and fabricated in our facility in Murphysboro, IL.



The Smart Choice.

Proudly Serving the American Electrical Construction Industry

