

3/2021  
R1



*Proudly Serving America's Heartland*

## Product Specification Data

All Penn Aluminum Conduit & EMT products are manufactured from US-produced domestic aluminum billet. Rigid Aluminum Conduit Pipe and Aluminum Electrical Metallic Tubing are extruded and fabricated in our facility in Murphysboro, Illinois.

- Meets the Provisions of the Buy American Act.
- Meets or exceeds the UL 6A Standard for Safety for Electrical Rigid Metal Conduit - Aluminum, Red Brass, and Stainless Steel. Underwriters Laboratories File # E514709.
- Meets or exceeds the UL 797A Standard for Safety for Electrical Metallic Tubing - Aluminum and Stainless Steel. Underwriters Laboratories File # E513195.
- Meets or exceeds the American National Standard Institute (ANSI) C80.5 Standard.
- Meets or exceeds Canadian Standards Association (CSA) Standard C22.2 No. 45.2.
- For additional information, please visit [www.pennconduit.com](http://www.pennconduit.com).

### Rigid Aluminum Conduit Specifications

Standard 10 foot length with coupling

Aluminum Alloy: 6063

UL File # E514709

Custom lengths longer than 10 feet available

Penn Part Number	US Trade Size	Approximate Weight per 100 feet w/ coupling	Nominal Outside Diameter*	Nominal Inside Diameter**	Nominal Wall Thickness**	Threads/Inch	Length of Finished Conduit without Coupling***	Master Bundle (Lift)		
								ft	pcs	lb
		lb.	in	in	in		+/- .25 in			
P-012-10-RAC	1/2	28.1	0.840	0.632	0.104	14	9' 11-1/4"	2,500	250	703
P-034-10-RAC	3/4	37.4	1.050	0.836	0.107	14	9' 11-1/4"	2,500	250	935
P-100-10-RAC	1	54.5	1.315	1.063	0.126	11-1/2	9' 11"	2,000	200	1,090
P-114-10-RAC	1-1/4	71.6	1.660	1.394	0.133	11-1/2	9' 11"	1,000	100	716
P-112-10-RAC	1-1/2	88.7	1.900	1.624	0.138	11-1/2	9' 11"	1,000	100	887
P-200-10-RAC	2	118.5	2.375	2.083	0.146	11-1/2	9' 11"	450	45	533
P-212-10-RAC	2-1/2	187.5	2.875	2.489	0.193	8	9' 10-1/2"	300	30	562
P-300-10-RAC	3	246.3	3.500	3.090	0.205	8	9' 10-1/2"	200	20	492
P-312-10-RAC	3-1/2	295.6	4.000	3.570	0.215	8	9' 10-1/4"	200	20	591
P-400-10-RAC	4	350.2	4.500	4.050	0.225	8	9' 10-1/4"	200	20	700
P-500-10-RAC	5	478.9	5.563	5.073	0.245	8	9' 10"	80	8	383
P-600-10-RAC	6	630.4	6.625	6.093	0.266	8	9' 10"	60	6	378

\* Applicable Tolerances Outside Diameter 1/2" to 1-1/2": +/- 0.015"; 2" to 6": +/- 1%

\*\* For information only. Not a standards requirement.

\*\*\* Rigid Aluminum Conduit is manufactured to produce a 10 foot length of conduit when a standard coupling is attached.



**PENN ALUMINUM CONDUIT & EMT**

A Marmon / Berkshire Hathaway Company

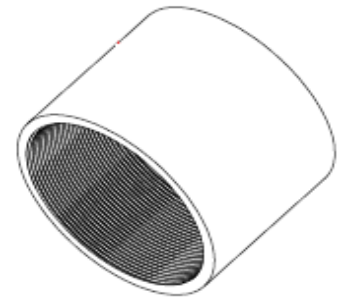


## Rigid Aluminum Coupling Specifications

Aluminum Alloy: 6061

UL File # E514709

Penn Part Number	US Trade Size	Approximate Weight per 100 Pieces	Nominal Outside Diameter	Minimum Acceptable Length	Standard Carton Quantity	Threads per Inch
		lb.	in	in	pcs	
P-012-CPL	1/2	6.1	1.078	1-5/8	100	14
P-034-CPL	3/4	9.1	1.328	1-41/64	50	14
P-100-CPL	1	12.5	1.562	1-31/32	50	11-1/2
P-114-CPL	1-1/4	18.9	1.953	2-1/32	50	11-1/2
P-112-CPL	1-1/2	23.3	2.219	2-1/16	50	11-1/2
P-200-CPL	2	34.6	2.750	2-1/8	50	11-1/2
P-212-CPL	2-1/2	68.3	3.281	3-3/16	25	8
P-300-CPL	3	91.4	3.812	3-5/16	25	8
P-312-CPL	3-1/2	108.0	4.438	3-13/32	10	8
P-400-CPL	4	142.0	5.000	3-33/64	10	8
P-500-CPL	5	241.9	6.219	3-61/64	5	8
P-600-CPL	6	321.0	7.312	4-1/4	5	8

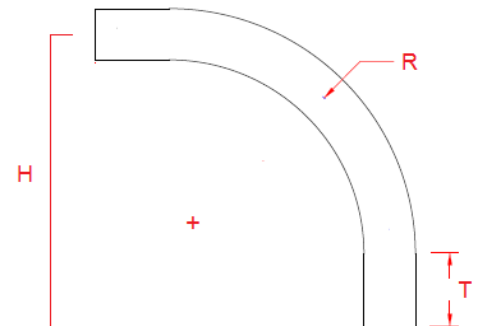


## Rigid Aluminum 90 deg Elbow Specifications

Aluminum Alloy: 6063

UL File # E514709

Penn Part Number	US Trade Size	Weight per Each	Radius "R"	Tangent "T"	Stub-up "H"	Threads per Inch
		lb.	in	in	in	
P-012-RL90	1/2	0.26	4.00	2.50	6.50	14
P-034-RL90	3/4	0.36	4.50	2.75	7.25	14
P-100-RL90	1	0.63	5.75	2.875	8.375	11-1/2
P-114-RL90	1-1/4	1.01	7.25	3.00	10.25	11-1/2
P-112-RL90	1-1/2	1.40	8.25	3.625	11.875	11-1/2
P-200-RL90	2	2.30	9.50	4.50	14.00	11-1/2
P-212-RL90	2-1/2	4.08	10.50	5.25	15.75	8
P-300-RL90	3	6.41	13.00	5.75	18.75	8
P-312-RL90	3-1/2	8.93	15.00	6.75	21.75	8
P-400-RL90	4	11.1	16.00	7.00	23.00	8
P-500-RL90	5	24.72	24.00	11.00	36.00	8
P-600-RL90	6	38.72	30.00	12.50	42.50	8





**PENN ALUMINUM CONDUIT & EMT**

A Marmon / Berkshire Hathaway Company



## Penn Aluminum EMT

- 1 Thin-walled and lightweight (just 1/3 the weight of steel), for easy handling and installation.
- 2 Fast and simple cutting and bending on the job site with metallurgical processing to minimize flattening, buckling and splitting.
- 3 Meets or exceeds the UL 797A Standard for Safety for Electrical Metallic Tubing - Aluminum and Stainless Steel. Underwriters Laboratories File # E513195.
- 4 Superior finished outer appearance.
- 5 Smooth internal finish from extrusion process with no weld line.
- 6 Connects quickly with standard EMT fittings.

*NOTE: As stated in NEC 358.14, "...galvanized steel fittings and enclosures shall be permitted to be used with Aluminum EMT when not subject to severe corrosive influences."*

- 7 Fiberglass fish tape recommended.

## Aluminum Electrical Metallic Tubing (EMT) Specifications

Aluminum Alloy: 6063

UL File # E513195

Standard 10 foot length - Deburred

Penn Part Number	US Trade Size	Approximate Weight per 100 feet	Nominal Outside Diameter	Nominal Inside Diameter*	Nominal Wall Thickness*	Master Bundle (Lift)		
						ft	pcs	lb
P-012-10-EMT	1/2	10.30	0.706	0.622	0.042	7,000	700	721
P-034-10-EMT	3/4	15.80	0.922	0.824	0.049	5,000	500	790
P-100-10-EMT	1	23.30	1.163	1.049	0.057	3,000	300	699
P-114-10-EMT	1-1/4	34.70	1.510	1.380	0.065	2,000	200	694
P-112-10-EMT	1-1/2	40.20	1.740	1.610	0.065	1,500	150	603
P-200-10-EMT	2	51.17	2.197	2.067	0.065	1200	120	614
P-212-10-EMT	2-1/2	74.59	2.875	2.731	0.072	610	61	455
P-300-10-EMT	3	91.18	3.500	3.356	0.072	510	51	465
P-312-10-EMT	3-1/2	120.00	4.000	3.834	0.083	370	37	444
P-400-10-EMT	4	135.66	4.500	4.334	0.083	300	30	407

\* For reference only. Not a requirement of UL 797A Standard.